

Refugee Resettlement

**Presented by the
Committee to end Refugee
Resettlement at CSI**



CENTER FOR SECURITY POLICY

securefreedom.org

Refugee Resettlement

Post World War I

- **Fridtjof Nansen**, Norwegian scientist and explorer appointed to be the first High Commissioner for Refugees post World War I for the League of Nations (1921)
- Built system of international, intergovernmental cooperation
- Nansen Passport - first internationally recognized passport

Post World War II

- United Nations established 1945
- UN High Commission for Refugees established 1950 – permanent mission
- 1951 Convention on the Status of Refugees, legally binding treaty applied only to European refugees who became refugees before 1951

1950 – Permanent Mission



UNHCR
UNITED NATIONS
HIGH COMMISSION
FOR REFUGEES

SPECIAL RAPPOORTEUR





A refugee is a person with a “well-founded fear of being persecuted for reasons of race, religion, nationality, membership of a particular social group or political opinion.

US Foreign AID

1960 Eisenhower established the Cuban Refugee Emergency Center in Miami

Before 1962, fed assistance was limited to entry, processing and transportation costs to destination - assistance was all private charity

Foreign Assistance Act of 1961

Migration and Refugee Assistance Act of 1962

Alliance for Progress – South and Central America

Kennedy expanded relief to 9-point program

- 10 assisting voluntary relief agencies
- Finding employment opportunities
- Resettling refugees from Miami to other areas
- Offering financing to meet basic maintenance requirements
- Providing health services
- Giving federal assistance for local public schools operating costs
- Providing training and educational opportunities
- Caring for unaccompanied children
- Distributing surplus food

Viet Nam

- Increased aid for military expansion (1961)
- Increased the number of military and technical advisors (1961)
- CIA supported coup on Ngo Dinh Diem's government of South Viet Nam (1963)
- 1964 Gulf of Tonkin farce and stepped up war in Viet Nam

Hart-Celler Immigration Act of 1965

- Phased out original quota system established in 1921
- Changed country of origin from mostly European to include Asia and the Middle East
- Civil Rights – anti-discrimination

United Nations 1967 Protocol relating to Status of Refugees (1951)

- Removed post World War II restrictions on the definition of a refugee
 - Time (refugee before 1951)
 - Displaced persons from Europe after the war

1975 Fall of Saigon - Vietnamese Boat People

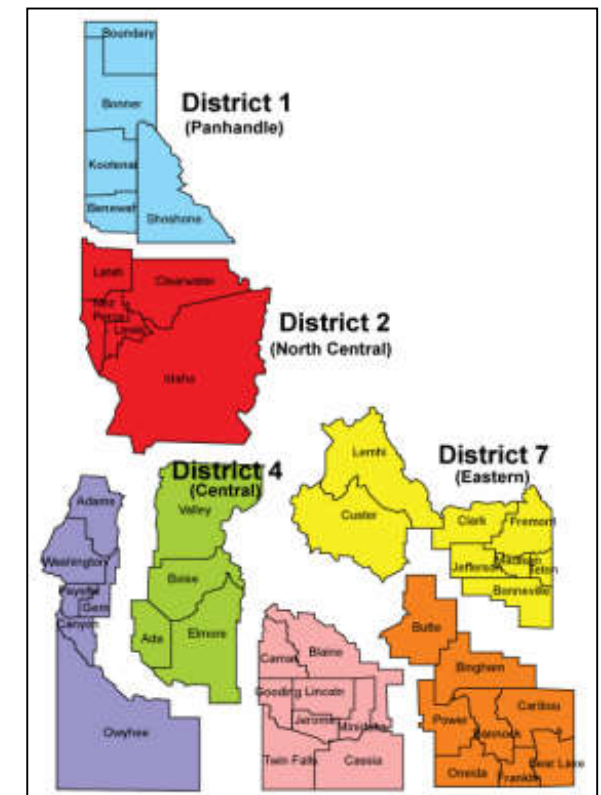
Refugee Resettlement



Idaho Privatized Social Services For Refugee Resettlement



- **Independent Agency (Private Enterprise) - 1974**
- **Contract with Idaho Association of Counties**
- **Run District Health Offices**
- **Run the Indochinese Refugee Assistance Program established by Governor John Evans**



Federally Defined Economic Development Districts



1975



- Public-Private Partnership
- External to Elected, Representative Government
- Federal Funds for Federally Defined Programs
- Region IV EDD – **Located at CSI**

Refugee Act of 1980 – Ted Kennedy

- Changed from U.S. definition of refugee to the United Nations Convention and Protocol on the Status of Refugees.
- Created Office of the United States Coordinator for Refugee Affairs and the
- Office of Refugee Resettlement to monitor, coordinate and implement refugee resettlement programs.
- Raised limit to 50,000 per year (which increased money and incentives for counties).
- Gave the Attorney General power to parole refugees

A color photograph of President Jimmy Carter. He is standing at a podium, smiling broadly at the camera. He is wearing a dark suit jacket, a white shirt, and a red tie. In front of him are several microphones. Behind him is a large American flag, with the stars and stripes clearly visible. The lighting is bright, and the overall tone is positive.



Thousands of Cubans packed aboard boats of all kinds and made the journey to a new home in the United States in 1980. The exodus was dubbed the "Mariel Boat Lift". photograph credit Miami Herald



Tim Chapman
Miami Beach 411 // Miami Herald

**Refugee
Resettlement
at the
College of Southern Idaho**

College of Southern Idaho

1980

- Program started by Marvin Glasscock, Director of Continuing Education
- Federal grant to teach English, Home Economics & related skills (Lise Swedberg)

1993

- Ron Black then **CSI Incubator Manager was appointed Director of the Refugee Program.**
- Black expanded the program and affiliated with the VOLAG USCRI. Grants flow through USCRI to CSI. (USCRI - US Committee on Refugees & Immigrants)
- It's not known if CSI got grant money from Mountain States at this point but probably they did.



Idaho Office for Refugees

NOT A STATE AGENCY

- Established as an Independent Agency - 2006
- Subsidiary of Mountain States Group (renamed Jannus Group)

Quote from the CSI Refugee Center history page:

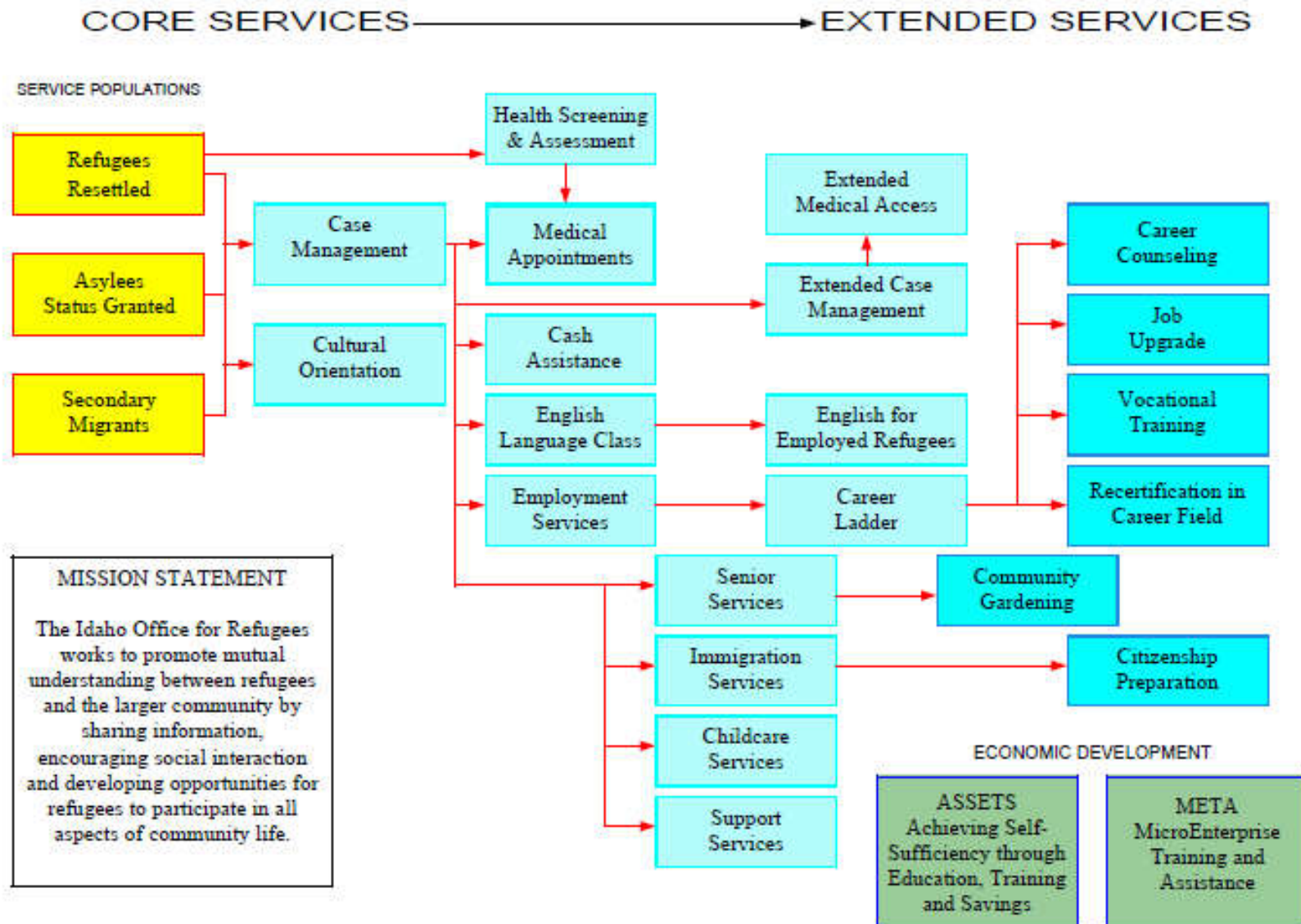
“Federal grant programs through the national affiliate were added, as well as federal grant programs administered through **the state refugee service replacement agency, the Idaho Office for Refugees.**”

- CSI gets grant money from the Idaho Office for Refugees AND USCRI

CSI Comprehensive One-Stop Shop

CSI Refugee Programs is a comprehensive one-stop refugee service program combining initial resettlement services for newly arriving refugees, through Case Management services and on-site English Language Training, as well as employment counseling and placement with local employers.

Idaho Office for Refugees



CSI - Costs for Refugee Resettlement

- **300 Refugee's planned for FY2016**
- **Federal Tax Funds**

\$1,330,000.00

Welfare / Medical Programs

Food Stamps/ WIC/ Section 8 Housing/ Medicaid/ Medicare/Dental/

Every refugee is enrolled in some form of welfare and medical programs for a time. A small amount of refugees are enrolled for life into the SSI/ Medicare Program. We currently do not have the costs for this but for the first 6 months for 300 refugees it is estimated at about over \$1,000,000.

Local Court and Law Enforcement Costs - (unknown – but there are social adjustment costs)

CSI - Costs for Refugee Resettlement

South Central Health District

Health Screening

\$ 110,000.00 Fed

19,000.00 State

CSI - Costs for Refugee Resettlement

Twin Falls School District Costs

❖ Based on 235 refugee students speaking over 19 languages

\$1,880,000.00 Fed
(\$8,000.00 per refugee student)

\$ 249,356.00 Local
(ESL Staff)

**Total 6 Month Cost
CSI Refugee Resettlement**

300 refugees at CSI

\$4,588,356.00

Refugee Assistance Package

- 8 months of services from the time of certification as a refugee
- Cash benefits, living arrangements and subsidies, medical care, language services, employment services, child care services
- Employment assistance & assistance to tap into grant/loan programs for small business
- Eligible to work immediately
- Unrestricted social security card and state-issued driver's license (voting)
- Special Legal Counsel services for employment discrimination
- Assistance to bring family members to the U.S.
- One year to apply for citizenship

LIVE

11:44 am PT

REFUGEE RESETTLEMENT IN THE U.S.

ROBERT CAREY

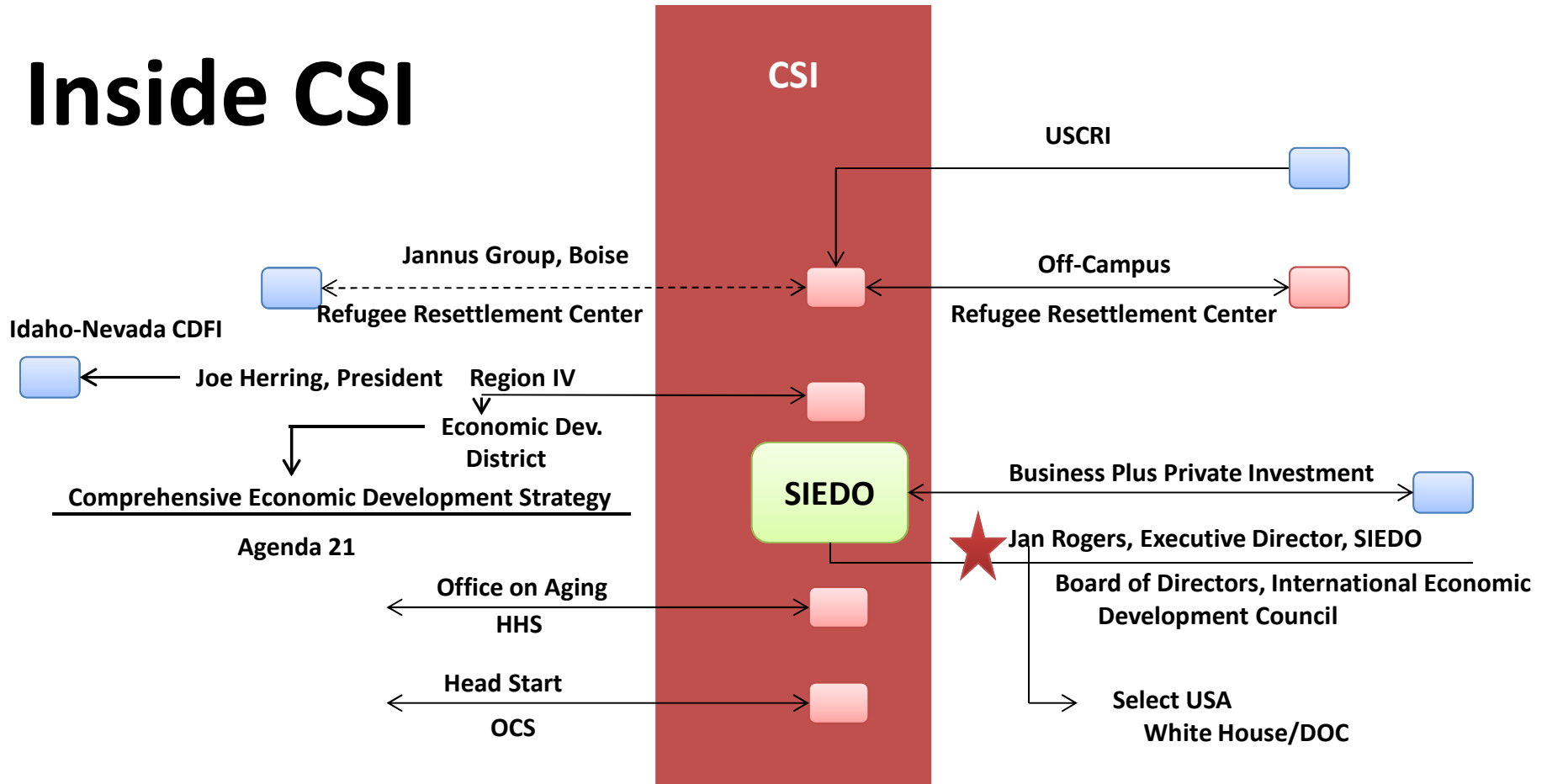
Health & Human Services Department
Office of Refugee Resettlement (ORR) Director

C-SPAN3
c-span.org

Refugee - 3 Years at Walmart
and he buys a car dealership?

REALLY?

Inside CSI

**CSI – College of Southern Idaho**

USCRI – U.S. Committee for Refugees and Immigrants

**HHS – Health & Human Services – Office on Aging –
offices are regional corresponding
to Economic Development Districts**

OCS – Office of Community Services (HHS)

SIEDO – Southern Idaho Economic Dev. Org

LIVE

9:17 am ET

U.S. NATIONAL SECURITY & SYRIAN REFUGEE CRISIS

MARK KRIKORIAN

Center for Immigration Studies
Executive Director

C-SPAN3
c-span.org

\$64,000 *

VS

\$5,300 in region

*** Includes salaries and costs for resettlement agencies**

**For these and many other reasons,
it's time to end Refugee Resettlement
at CSI and in all of Idaho**