

Refugees as a Weapons System

What we are faced with is war in a different context than guns and bullets. It's "war in the context of everything else" as Thomas P.M. Barnett called it.

If I'm going to tell you that this is a conspiracy – and I am, then I have to show you how I arrive at that conclusion and give you the path so that you can do your own evaluation and draw your own conclusions.



The Statue of Liberty – “gift” from the people of France to the United States

It sits in New York harbor on Liberty Island

It was designed by Frederic Auguste Bartholdi who was inspired in 1865 by French law professor Edouard Rene de Laboulaye

It was dedicated on October 28, 1886



I started this research at the request of The Voice of Idaho News. They were getting information that in the area around the center, the refugees had no understanding of boundaries – property in particular. They would steal everything that was not nailed down and the cops would do nothing about it.

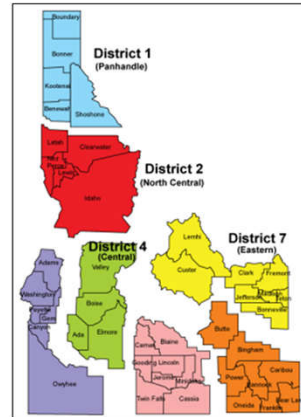
Privatized Social Services



Mountain States Group^{INC.}



- Independent Agency (Private Enterprise) - 1974
- Contract with Idaho Association of Counties
- Run District Health Offices



Mountain States / Jannus - Doing Business as

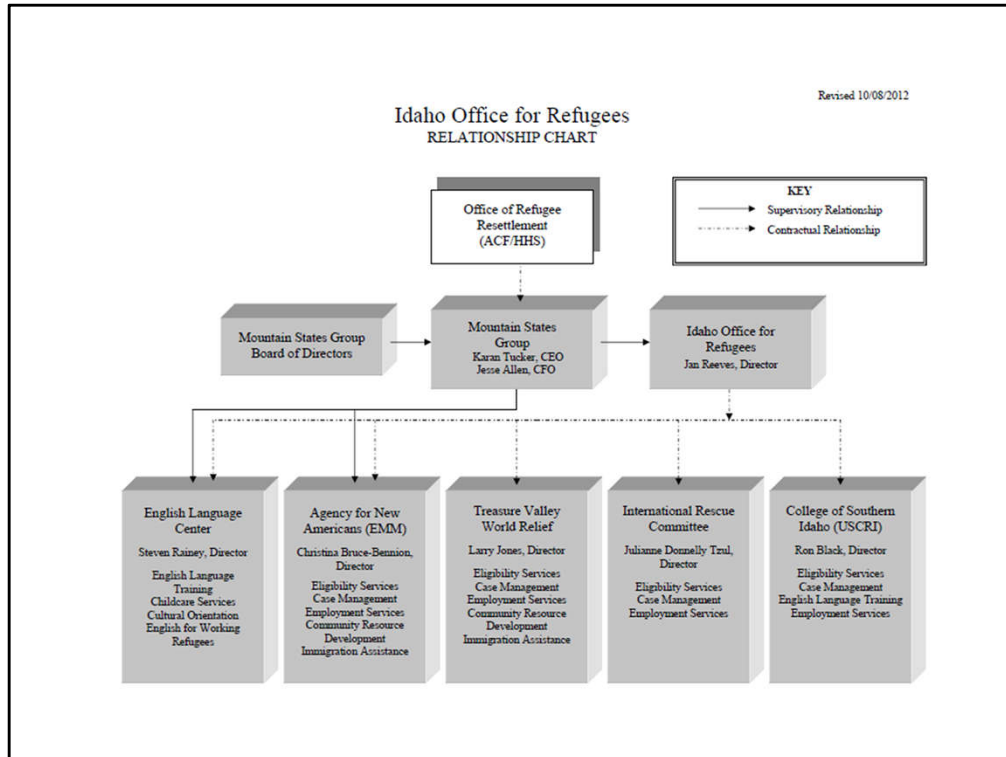
Agency for New Americans
Mountain States Early Head Start
Idaho Area Health Education Center
Foster Grandparents
English Language Center
Idaho Center for Fiscal Policy
Office of Consumer and Family Affairs
Global Gardens
Retired Senior Volunteer Program of Southwestern Idaho
Idaho Suicide Prevention hotline
Nutrition Works
Women's Business Center
Idaho Kids Count
Consumer connect services for people enrolling In Idaho health Insurance Exchange
First time home buyer

Idaho Office for Refugees (2006)

Micro Enterprise Training & Assistance (SBA grants)

Refugee Ag Partnership Program – Farming 101

Whatever the fed government funds – grows in mission





Idaho Office for Refugees

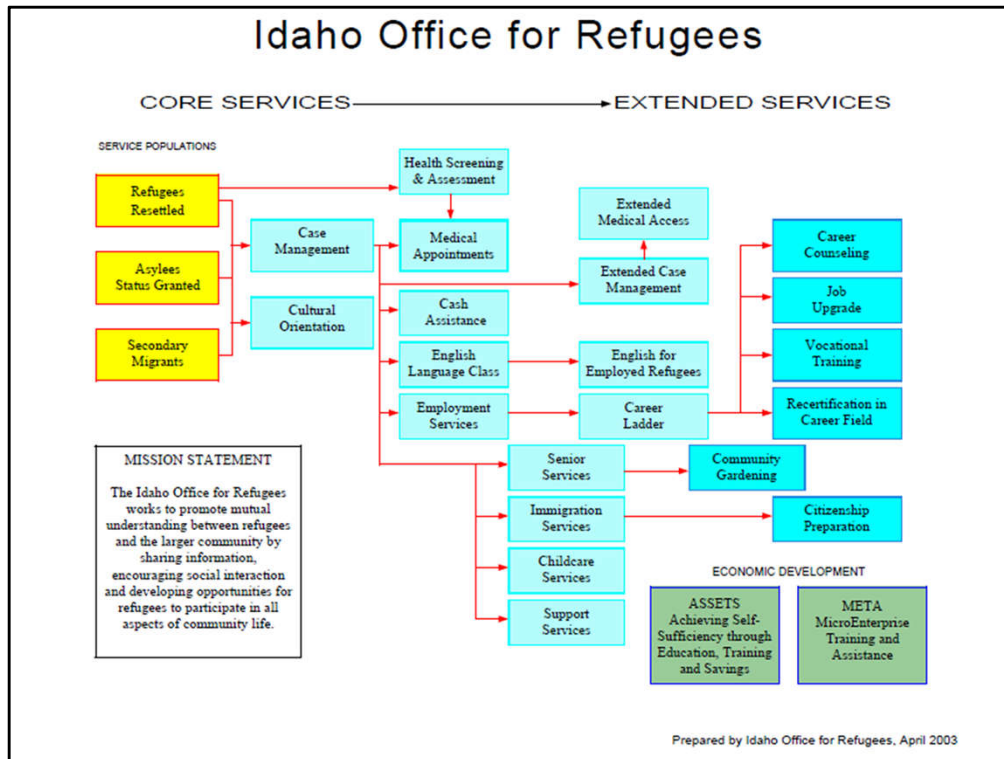
Subsidiary of Mountain States Group

Independent Agency - 2006

- 8 months of services from the time of certification as a refugee
- Cash benefits, living arrangements and subsidies, medical care, language services, employment services, child care services
- Eligible to work immediately
- Unrestricted social security card and state-issued driver's license (voting)
- Special Counsel services for employment discrimination
(note: American citizens can't get this because "American" is not a protected class)
- Assistance to bring family members to the U.S.
- One year to apply for citizenship

The Resettlement Program is run by Mountain States Group. It was started in 2006. Recently they changed their name to the Jannus Group.

<http://www.acf.hhs.gov/programs/orr/resource/asylee-eligibility-for-assistance-and-services>



The salaries of the employees, facilities, etc. Paid for with grant money from feds

The services - Medicaid, Schools for the Children, vocational training, etc. Paid for by the taxpayers

Job Placement - paid for by the displaced American citizen who doesn't get the job

MicroEnterprise - SBA loans for minorities with preferential government contracting for "disadvantaged" - pa

IT Contracting – Fusion Centers... Begins Emergency 9-11, disadvantaged contracts for Transportation – but the only way to meet the requirement is IT systems.



Crafting A New Life in the Treasury Valley

March 20 - May 2, 2010
Idaho State Historical Museum

Boise, A Welcoming Community

How do refugees find their way to Idaho?

Boise is considered a "preferred community" by the U.S. Department of State and the Office of Refugee Resettlement. The city's range of services, high quality of life, and welcoming spirit make it a promising place for incoming refugees to start anew.

It is a complex process and large network of organizations that bring refugees to Boise. The United Nations first establishes a person's refugee status and then the U.S. Department of Homeland Security determines his or her eligibility for resettlement in this country. International NGOs (non-governmental organizations) interview people living in refugee camps. The Department of State contracts with ten national resettlement agencies that have local affiliates. The destination for incoming refugees is decided at a national level. Unless they have family living in a particular place, refugees have no say over where they will land in the U.S. Technology helps refugees keep in touch with other community members scattered across the country. Sometimes people relocate from their original resettlement sites for employment or to live near family or friends, a process known as "secondary migration."

Federal / International - Refugee Network

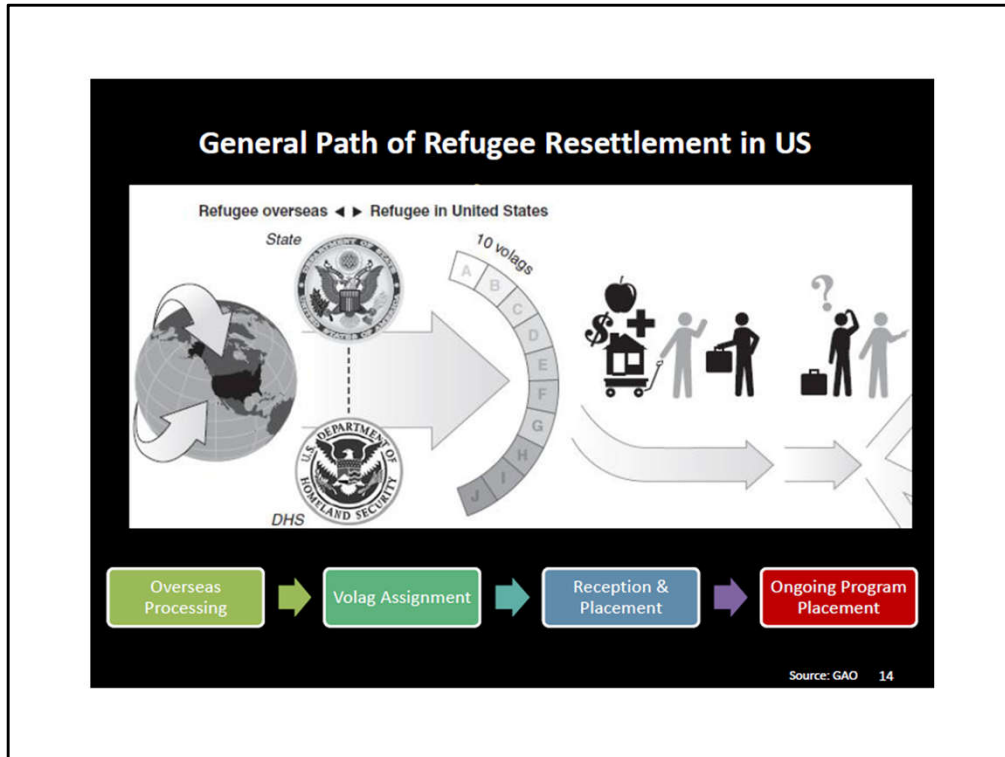
- **Health & Human Services (HHS)**

- Administration for Children & Families
 - Refugees
- Contracts/grants with county contractors – Mountain States (ID Refugees)

- **State Department → United Nations**

- **USAID**
 - Contracts/grants “voluntary independent agencies” (VOLAGS)

- **Department of Homeland Security**



IRC Report that was posted on the website of the City of Dallas
Volag - Volunteer Agency



League of Nations - 1919

ACLU was founded in 1920 - for “immigrant rights” - refugees -

UN Relief and Rehabilitation (UNRRA - 1943)

International Relief Organization – non permanent specialized agency - 1947

UN High Commissioner for Human Rights – refugees, 1951 Convention

1951 – Convention on the Status of Refugees - Legally Binding Treaty under international law; applied only to refugees before 1951

Principle of non-refoulement; no return of refugees to territories where they were persecuted

1967 Protocol – changed 1951 Convention – removed dates in 1951 - refugees before 1951



US Agency for International Development

These are the voluntary agencies that are certified with Health & Human Services for matching grants for refugee resettlement

<http://www.usaid.gov/sites/default/files/documents/1866/volag2013.pdf>

Volag: International Rescue Committee



From Harm to Home

DONATE NOW.

Support our work >

DONATE >



EBOLA CRISIS

The International Rescue Committee has been at the forefront of the fight to stem the spread of the deadly Ebola virus since the first cases were diagnosed in Liberia and Sierra Leone in March 2014.

GET UPDATES FROM WEST AFRICA >

The International Rescue Committee (IRC) responds to the world's worst humanitarian crises and helps people to survive and rebuild their lives. At work in over 40 countries and 22 U.S. cities to restore safety, dignity and hope, the IRC leads the way from harm to home.

OUR IMPACT >

GET IRC UPDATES

Your email address >



<http://www.rescue.org/>

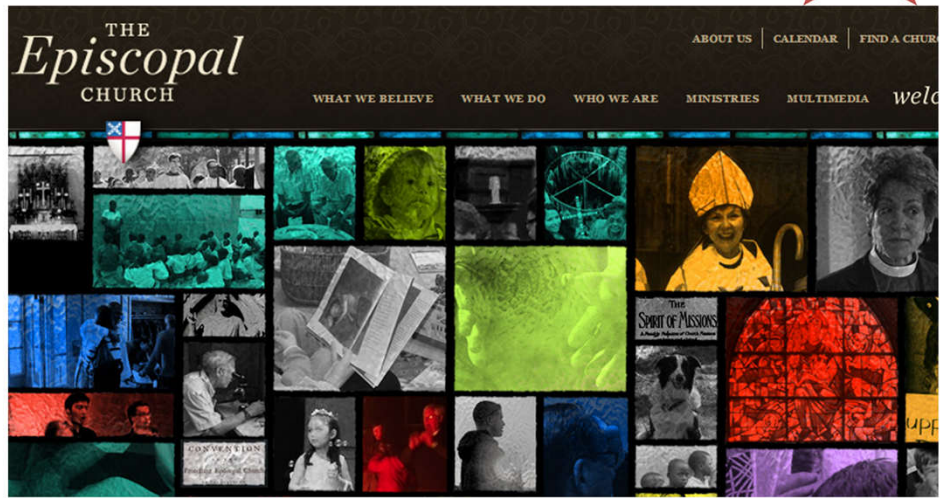
Formally incorporated as IRC in 1933

Communist Cell out of Columbia University

Today, CEO - run by UK former Foreign Secretary; David Miliband, outspoken leftist....
His father was a well-known Marxist

Volag: Episcopal Migration Ministries

Boise



<http://www.episcopalchurch.org/>

The Episcopal Church resettlement activities operates under the name: Agency for New Americans but it is an arm of the Episcopal Migration Ministries.

The Episcopal Church is the Church of England – renamed after the Revolutionary War. That was done because Church of England Members must swear allegiance to the Queen – which was not a popular thing to do after the Revolutionary War.

The Episcopal Church is part of the Anglican Communion – which is an NGO of the United Nations and as such, they support and promote Agenda 21. The Anglican Communion is the consolidated church leadership of the British Commonwealth – renamed the Commonwealth of Nations in 1949.

Propaganda

- “Nation of Immigrants”
- Humanitarian Endeavor
- Compassion for the poor
- Alleviating Poverty
- Giving back



Church Lady

Volag: World Relief - International and Domestic

Boise



<http://worldrelief.org/>

<http://worldreliefboise.org/>

USAID

1960 Eisenhower established the Cuban Refugee Emergency Center in Miami

Before 1962, fed assistance was limited to entry, processing and transportation costs to destination

Foreign Assistance Act of 1961

Migration and Refugee Assistance Act of 1962

Alliance for Progress – South and Central America

Kennedy expanded relief to 9-point program

- 10 assisting voluntary relief agencies
- Finding employment opportunities
- Resettling refugees from Miami to other areas
- Offering financing to meet basic maintenance requirements
- Providing health services
- Giving federal assistance for local public schools operating costs
- Providing training and educational opportunities
- Caring for unaccompanied children
- Distributing surplus food

http://www-rohan.sdsu.edu/~psargent/1Quantitative_Refugee.pdf

USAID LOCATIONS



USAID –

Paramilitary social workers for Communism - for the United Nations

United Nations

Refugees Settled in Idaho

Africa	East Asia	Central Asia	Latin America	Near East/Asia
Burundi Cameroon Congo (Zaire) Eritrea Ethiopia Guinea-Bissau Kenya Liberia Nigeria Rwanda Somalia Sudan Togo	Burma Vietnam	Afghanistan Armenia Azerbaijan Belarus Bosnia Herzegovina Croatia Georgia Russia Ukraine Uzbekistan Yugoslavia	Columbia Cuba	Bhutan Iran Iraq Pakistan Syria

Source: Idaho Office of Refugees

5,341 between 2001 – 2011 (does not count chained migration of relatives)

http://www.idahorefugees.org/refugees_in_idaho/

Vietnamese Boat People

* 1964 Gulf of Tonkin



Mountain States Group incorporated 1974 as private social services

Fall of Saigon – evacuation – 1975

Idaho Governor John Evans established the Indochinese Refugee Assistance Program

Original plan – to evacuate about 17,600 Vietnamese citizens who worked for U.S.

“Sympathetic media” pressured government to evacuate & resettle 200,000

Vietnamese, Cambodians, Laotians, Hmong

Second Wave – 1978-1981 400,000

Ethnic Chinese, Laotians, Cham, Montagnards, Khmer ethnic minorities

Settled primarily in Orange County, Houston, San Jose, Washington DC (Alexandria)

“Big Surprise” - they wanted to live in their own communities

<http://www.asian-nation.org/exodus.shtml>

Hart-Celler Immigration Act of 1965

<http://cis.org/1965ImmigrationAct-MassImmigration>

http://www.idahorefugees.org/refugees_in_idaho/

Refugee Act of 1980 – Ted Kennedy

Changed from U.S. definition of refugee to the United Nations Convention and Protocol on the Status of Refugees.

Created Office of the United States Coordinator for Refugee Affairs and the Office of Refugee Resettlement to monitor, coordinate and implement refugee resettlement programs.

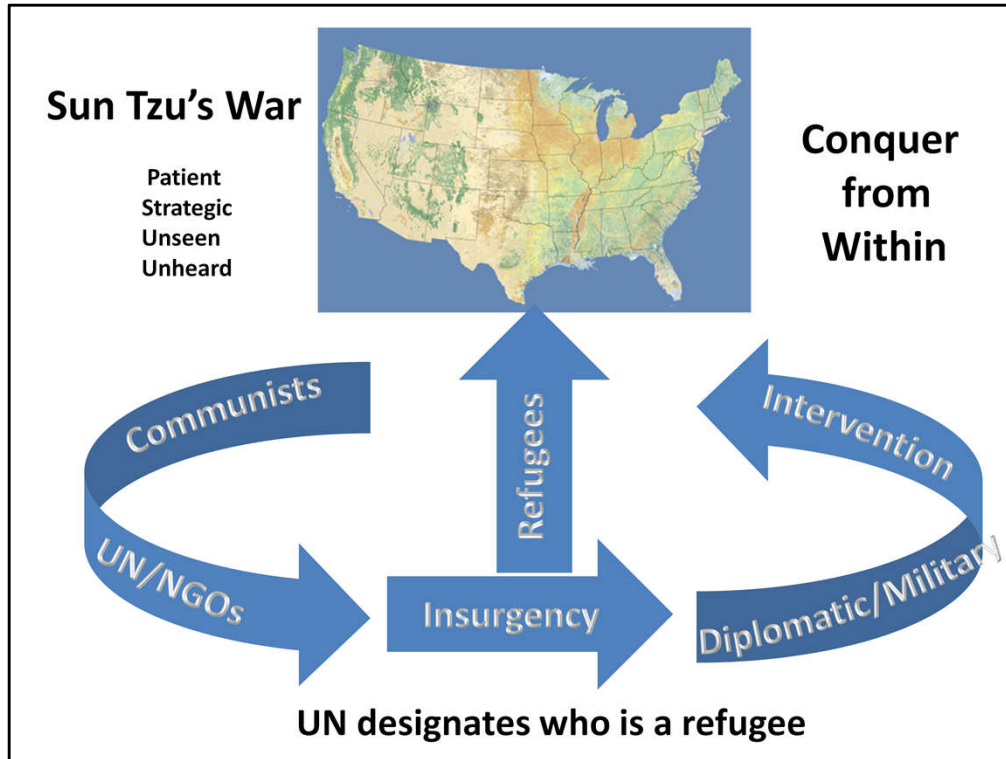
Raised limit to 50,000 per year (which increased money and incentives for counties).

Gave the Attorney General power to parole refugees



Castro emptied his prisons and insane asylums

Led to privatization of prisons – 1st contract was as a detention center for cuban “refugees”



Madelyn Albright - Senate hearing January 30, 2015 - Senate Foreign Relations

George Shulz & Henry Kissinger

Albright said, "the ISIS insurgency in Syria is going to create the largest refugee crisis in 70 years"

Aid is needed for the millions of refugees who have fled Syria

Governance - Organizational Structure

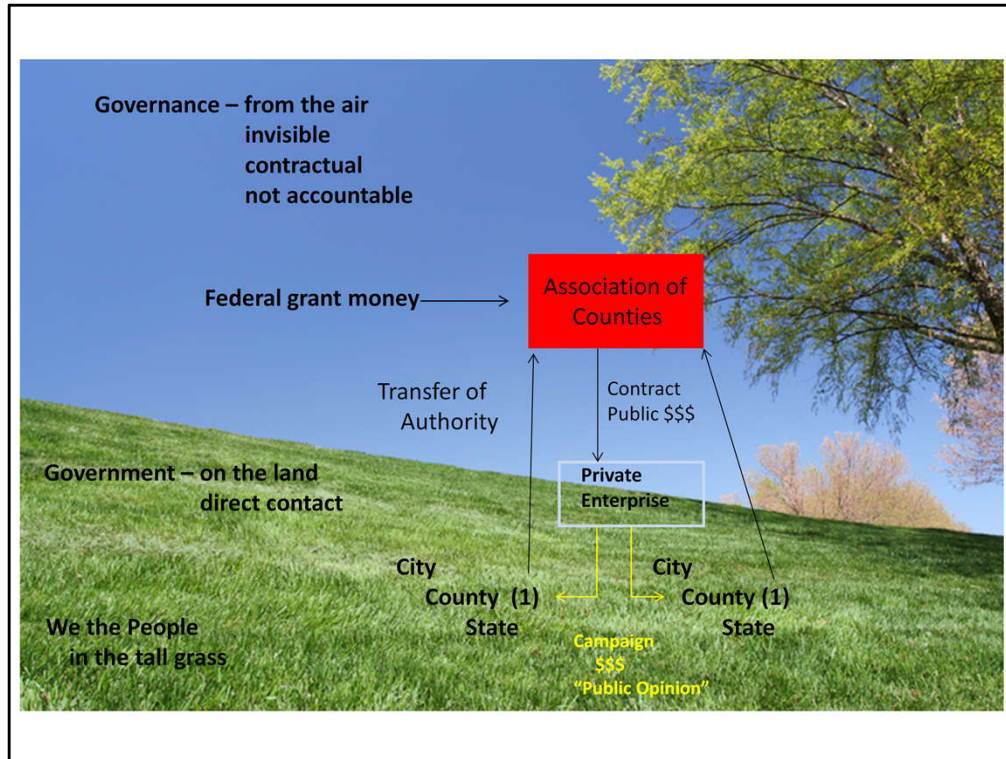
- ❖ Privatization
- ❖ Management of government functions by contract and by regulation
- ❖ Independent Agencies
 - Contractors
 - Federal Money
 - Federal Programs
- ❖ **Regional Organization – County Level - Idaho - Federal/UN Agenda**
 - Economic Development (1975)
 - Public Health (1974)
 - Metropolitan Planning Organization (1977)
 - City/County Planning & Zoning (1996)
 - Sheriffs – Emergency 911 *** **Fusion Centers**
 - Includes Fire & Hospitals
 - Schools – in progress

Disintegration of elected representative government under a constitutional system

Government

Understand globally

Fight locally



Governance – from the air
Invisible
Contractual
No accountability

The Idaho Association of Counties is “governance”
One elected official from each county - dilution of power at the individual county level

Federal Grant money -

Form 990 – 2014 - Mountain States Group / Idaho Refugees

“Acts as Fiduciary or trustee holding cash and cash equivalents in separate bank accounts on behalf of clients. Jannus is the administrator for parallel savings accounts for the **federally-funded refugee savings program which provides for a 1 to 1 match** of federal dollars for participating refugees.”

Give grants to other government agencies and organizations

	College of Southern Idaho	400,000		
USAID	International Rescue Committee	364,000	↔	Kickback Grant Money
USAID	Treasure Valley World Relief	375,000	↔	
	Boise State University	92,000		
	Boise Independent Schools,	123,000		
	West Ada Joint School District	23,000		
	Twin Falls School District	71,600		

Savings Accounts - 50/50 match Small business Administration – minority preferential funding and government contracts

\$11 – 13 million a year mostly grants, small percentage fees from programs

For Refugee Resettlement

Before 1980

- 85% of the money went to states

In 1983

- the federal government changed to assistance grants to counties
- grants are to states but are administered by counties

Disempower the State
County Rackets
Police State Control Systems

The Resettlement Program is run by Mountain States Group. It was started in 2006. Recently they changed their name to the Jannus Group.

<https://www.youtube.com/watch?v=mbTJrLX2T7A>

http://www-rohan.sdsu.edu/~psargent/1Quantitative_Refugee.pdf

Commune ... ism

Collectivization

Corrupt Organizational Structure

Central Planning – Central Control

Money – Blackmail Traps

Systemic Corruption



What I've been showing you is a different kind of war

It's been played like a chess game

We are in check

Your move.